

vehicle : C5 (X7)	domain	OPR : 11525
component	General points	function allocation of PSF1 fuses
D3BQ4UP0	JUNCTION BOX - FUSE BOX (PSF1) IN ENGINE COMPARTMENT	

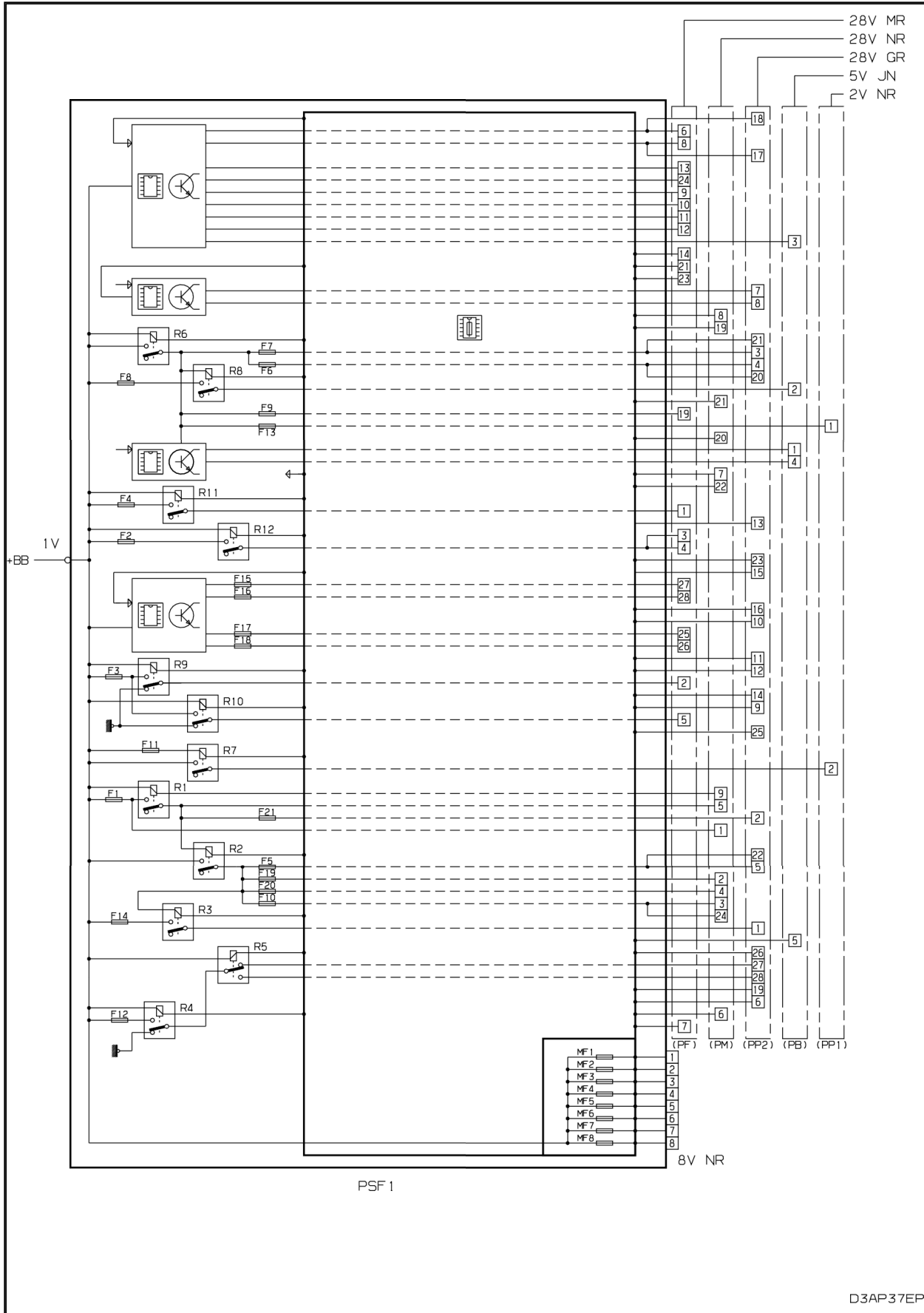


fig. d3ap37ep

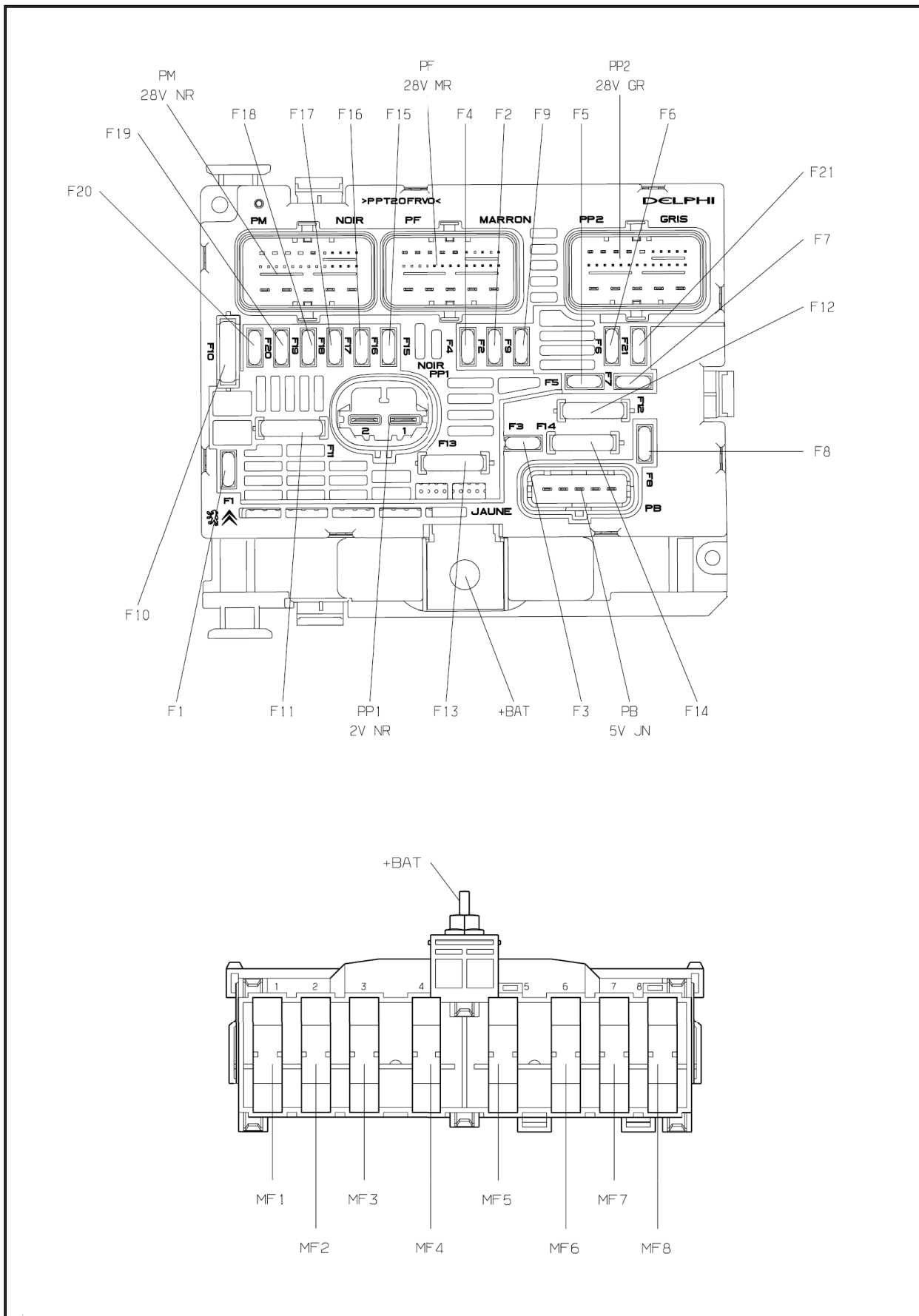


fig. d3ap37fp

engine compartment fuse box (PSF1)

fuses	A	supply	matching
F1	20A	battery +	multifunction motor control
F2	15A		horn
F3	10A		front/rear screen wash pump
F4	10A		headlamp wash pump
F5	15A		multifunction motor control

F6	10A	ignition controlled +ve	air flowmeter - directional lighting - headlamps dynamic correction control unit - diagnostic socket	
F7	10A		gear lever blocking actuator control relay automatic gearbox - ECU and electrohydraulic block automatic gearbox - electrohydraulic power steering	
F8	20A/25A	battery +	Starter motor control	
F9	10A	ignition controlled +ve	brake dual-function switch - clutch switch	
F10	30A	battery +	multifunction motor control	
F11	40A		front air conditioning blower	
F12	30A		windscreen wiper	
F13	40A	ignition controlled +ve	built-in systems interface ignition controlled +ve	
F14	30A	battery +	not used	
F15	10A		RH main beam	
F16	10A		LH main beam	
F17	15A		LH dipped beam	
F18	15A		RH dipped beam	
F19	5A		multifunction motor control	
F20	15A		multifunction motor control	
F21	10A		multifunction motor control	
MF1	50A 20A (DT17)		battery +	fan
MF2	80A			additional heater burner - air conditioning - fog lamps
MF3	80A	supplies (BFH5 and BFH12)		
	50A (DT17)	power steering electropump unit		
MF4	80A	fan		
MF5	80A	supply BSI		
MF6	20A	supply ESP		
MF7	40A	supply ESP		
MF8	20A	active suspension with variable damping		
	80A	supply BSI		

property of PSA Peugeot Citroën

16/09/2021